



TABLE TOP PUBLIC SCHOOL P&C
CALL FOR ARTIST IN RESIDENCE

Expression of Interest
Apply Now



Contact
Cara Crosswhite - P&C President
(m) 0410 884 807
(e) caracrosswhite@me.com
Andrew McEachern - Principal
(p) 02 6026 2220

EXPRESSION OF INTEREST (EOI)

Artist in Residence Program at Table Top Public School, NSW

Table Top Public School P&C is seeking EOIs for our two-week artist-in-residence program.

Open to emerging or established artists working in any art form, the residency will provide the inspiring location of Table Top, NSW, from which to produce their art while at the same time mentoring students at Table Top Public School and the local community through their artistic practice.

Those with experience working with children and answering many curious questions are encouraged to apply.

Studio space is provided on the school grounds in the refurbished 1850s schoolhouse, and accommodation is provided at Dunraven, a Sir Roy Grounds-designed Modernist masterpiece with stunning views over Lake Hume and the district.

Over the two weeks (during the NSW school term in October 2023), the artist will have time to delve into their creative practice while leading a community engagement project in collaboration with Table Top Public School. Whilst this is a pilot program, it is hoped to become an ongoing residency.



Workspace

Table Top Public School is a small rural school of 101 students (aged 5 to 12 years) with four classrooms, following the NSW curriculum. However, due to the size of the school, there is no art teacher and minimal access to the creative arts in Table Top.

Twenty-four-hour studio space is provided on school grounds in the refurbished 1850s Yambla building, the original Table Top Public School schoolhouse.

Yambla is an open room with high ceilings, power, heating/air conditioning, natural light and a covered verandah, all wheelchair accessible via a ramp.

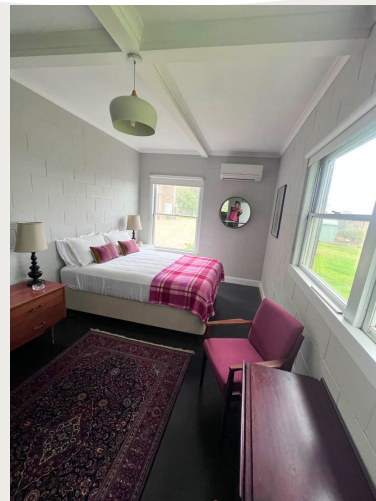




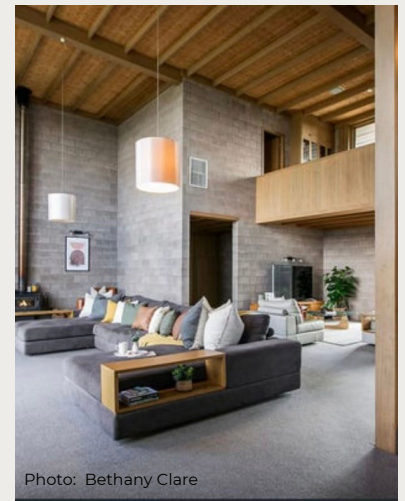
Accommodation

Accommodation is provided in a self-contained studio bungalow on Dunraven, a Sir Roy Grounds-designed Modernist masterpiece on a hill with stunning 360-degree district views, including overlooking Lake Hume.

There is a covered outdoor space to use as additional studio space or use the 5 acres of the property. Dunraven is a 5-minute drive from Table Top Public School. See the FAQs for more details about the accommodation.



Host house & surrounds



Aims

To provide Table Top Public School students and members of the local community access to an emerging or established artist. To provide an inspiring example to the children that encourages the development of their artistic endeavours. To promote collaboration between the artist, students and community to help build interest in artistic pursuits through a community engagement project centred around the artist's art practice.

Concept

The artist in residence is expected to work on the production of their own practice, using the Yambla building as their studio, and interact with the Table Top Public School students in their daily artistic work. For example, this could be through an art lesson.

The residency is non-prescriptive however the artist is expected to be proactive and lead a community engagement workshop for the wider Table Top community that is suitable for all ages and helps build community participation in the arts.

Requirements

The artist must have:

- a desire to produce their art form in a rural area
- an additional desire to want to share their art form with primary school students and the wider Table Top community
- a valid NSW Working with Children Check
- a valid ABN
- Public Liability insurance
- own transport (no public transport is available, so the artist must have their own vehicle)
- adhere to NSW Department of Education Community Use Agreement and Child Protection Declaration.

Payment:

The artist will receive a stipend of \$2500. Additionally, there is \$1500 for materials to lead the community engagement project and student workshops.

Accommodation is provided free of charge.

Application requirements

The artist should include:

- a brief curriculum vitae
- samples of previous work (maximum ten images with reference to materials, dimensions, location, collaborative partners/commissioner (if applicable), budget, etc)
- a short (2mins maximum) video of yourself discussing/representing your art, why you want the residency, what you want to work on while in residence and initial ideas for the community engagement project/school workshops
- Initial ideas for the community engagement project/school workshops should include what you want to do, why you want to do it and how you are planning to do it, and any specific materials required
- a statement (less than one page) outlining why you want the residency and a clear description of the area of activity you will be undertaking/concentrating on while in residence
- two referees with contact details
- NSW WWWC number

How to apply

To be considered please express your interest by **5.00 pm Friday 21 July 2023.**

Email your EOI to caracrosswhite@me.com

We welcome support material via web links (such as Vimeo or YouTube, or social media sites) or as digital files (like PowerPoint).

Please note that the maximum file upload per application should not exceed 10MB.

For further information please contact:

- Cara Crosswhite (President Table Top Public School P&C on 0410 884 807)
- Andrew McEachern (Principal, Table Top Public School) on 02 6026 2220.



AlburyCity

Thank you to AlburyCity Council
for funding through their
Community and Cultural Grant 2022-2023

Frequently asked questions

Where is Table Top?

Table Top is located 15 km north of Albury, on the NSW/Victorian border. The nearest bank, grocery store and medical services are at Thurgoona (8 mins drive), and more extensive services are in Albury (20 mins drive).

How do I get there?

Due to the rural nature of the residency, artists must have their own transport.

Can I bring my partner or pet?

The artist-in-residency is open to singles and couples - sorry, no pets allowed.

Where will I stay?

Accommodation is provided on Dunraven in a studio bungalow with a queen size bed, seating area, TV, reverse cycle heating/cooling, kitchenette (with full fridge, microwave, kettle, coffee machine, toaster and hot plate), a bathroom with shower and toilette, and beautiful views out over the paddocks and into the distance.

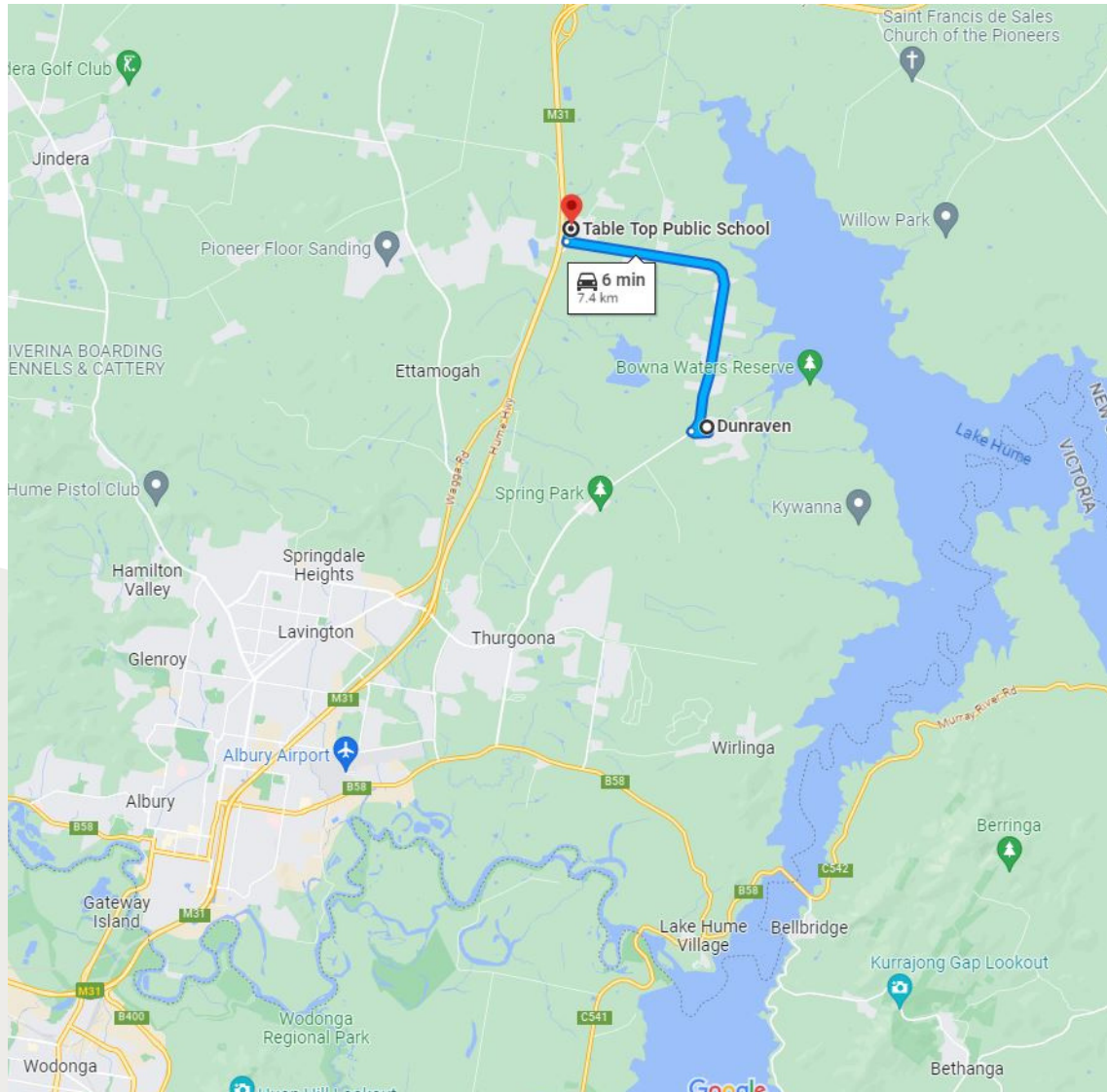
Artists are welcome to use the swimming pool, sauna, tennis court, bicycles, kayak, and stand-up paddleboard (we are a short distance from Lake Hume and the Murray River). There is strictly no smoking or vaping indoors at Dunraven.

Whom do I contact if I need more information?

Please get in touch with Cara Crosswhite (President, Table Top Public School P&C) on 0410 884 807 or Andrew McEachern (Principal, Table Top Public School) on 02 6026 2220.

Location

Click on link to Google maps [Table Top Public School](#)



Thank you for your interest.